



TIDE TABLES, MAP & MORE

- immediate care centers 80
- area history82
- liberty ships84
- yesterday & today86
- tide tables89
- St. Simons Island map . .94
- index96

Long-time resident, newcomer, or just visiting, we're always here for you.

The Immediate Care Centers offer prompt, walk-in medical treatment for minor injuries and unexpected illnesses. Our exceptionally trained physicians and specialty staff are dedicated to providing the highest quality health care available. No appointment necessary.

Call or visit www.sghs.org for hours of operation.

Glynco Immediate Care Center

15 Gable Court, Brunswick • 912-466-5400

Glynn Immediate Care Center

3400 Parkwood Drive, Brunswick • 912-466-5800

St. Simons Immediate Care Center

5000 Wellness Way, St. Simons Island • 912-466-5900



**IMMEDIATE
CARE CENTERS**

GLYNCO | GLYNN | ST. SIMONS

A strategic affiliate of Southeast Georgia Health System

area history

The first known inhabitants of St. Simons Island, as far back as 3000 B.C., were the Timucuan and Guale Indian tribes. In the 1500s, the Spanish built missions on each of the major Georgia coast islands. Jesuit and Franciscan priests followed in an attempt to convert the natives to Christianity.

A century later, after several Indian uprisings, the missions were abandoned. In 1721, Fort King George, the first English fort in Georgia, was built at the mouth of the Altamaha River, near what is now Darien, Georgia, as an outpost to protect the English city of Charles Towne (Charleston) from the Spanish in Florida.

In 1733, young James Edward Oglethorpe, interested in providing a sanctuary for those who had little chance to succeed in England, laid out the town of Savannah. With the colony underway, he began to look for a suitable site for a new fort to protect Savannah from the Spanish in the south. In 1736, near a curve in the Frederica River on St. Simons Island, he built Fort Frederica. Accompanying him were John and Charles Wesley, brothers who began their preaching under the oaks at Frederica. The brothers would later return to England to help found the Methodist movement.

Oglethorpe, who was wise in his decision to protect the town of Savannah, saw the merits of his fortifications tested when the Spanish attacked St. Simons in July of 1742. A series of strategic moves by the British colonists convinced the Spanish they were up against insurmountable forces. The Battle of Bloody Marsh

on the south end of the Island established Georgia's claim to all the land north of the St. Mary's River. The land remained under English control until the Revolutionary War.

In the latter part of the 18th century, the fort fell into disuse. Today the river washes against the ruins of the fort, which in its time was one of the largest erected in North America. Now a national monument, the fort is a testament to its British heritage.

After the American Revolution, settlers who came to the island at this time were mainly large-scale farmers—immigrants from England and Scotland, as well as colonials from South Carolina. With them came slaves to cultivate the land. Huge live oaks were felled to build America's first navy. Fourteen plantations on the Island cultivated a variety of long-staple cotton known as sea island cotton which was used to produce the finest quality chambray and lace.

The planter families gathered to worship at Christ Church on the north end of the island. The gravestone inscriptions in the cemetery document the prominent families of the time, including the Coupers, the Pages, and the Kings.



Following the Civil War, the Reverend Anson Phelps Dodge, Jr., rebuilt the church that had been desecrated during the fighting. Few plantations remained, and life on the Island changed. Fortunately, the trees that had facilitated the area's economic gain in the previous century provided the means to recover from the effects of war. A sawmill was established at Gascoigne Bluff where timber was cut into lumber for use all over the world.

In the 1920s, developers, notably Ohio industrialist Howard E. Coffin, saw the Island's potential as a resort destination, ushering in a new era for St. Simons. Buying large tracts of lands, developing The Cloister (a resort hotel on Sea Island), and establishing a golf course on the land that had once belonged to Retreat Plantation, Coffin and his cousin, Alfred W. Jones, laid the foundation for the growth of The Sea Island Company in 1928. People arrived in droves.

Drawn by the island's enigmatic energy, visitors initially rode ferries that let them off at the Pier. After 1924, they crossed via the causeway, which bridges the four miles of marsh and five tidal rivers between St. Simons and the mainland. To accommodate the influx of tourists, other resort hotels were built; soon after, motels and condominiums were added. Today, tourism continues to be one of the most important industries for the Island and Glynn County.

A simple walk down the pier and around the Village of St. Simons is a wonderful introduction to the Island's treasures. Here locals and tourists mix, waves gently lap against the pier, soft winds rustle, and the lighthouse shines. Take time to get sand in your shoes and learn what it is to be an Islander. Before you know it, the Island will capture your heart.

liberty ships

In 1942, in response to a shortage of ships to carry war supplies, the United States Maritime Commission selected eighteen sites along the Atlantic, Pacific, and Gulf coasts to build cargo vessels that would become known as the “Liberty Ships.”

The ship’s design, a British concept adapted by the United States, was inexpensive and quickly built, thanks largely to construction that used welding rather than riveting. The focus was on efficiency rather than beauty, causing the ships to bear the title “Ugly Ducklings.” President Franklin D. Roosevelt called them “dreadful looking objects.” Ugly or not, the 2,751 Liberty Ships of World War II played a critical role in the Allied victory.



Photos courtesy of www.antiqpix.com

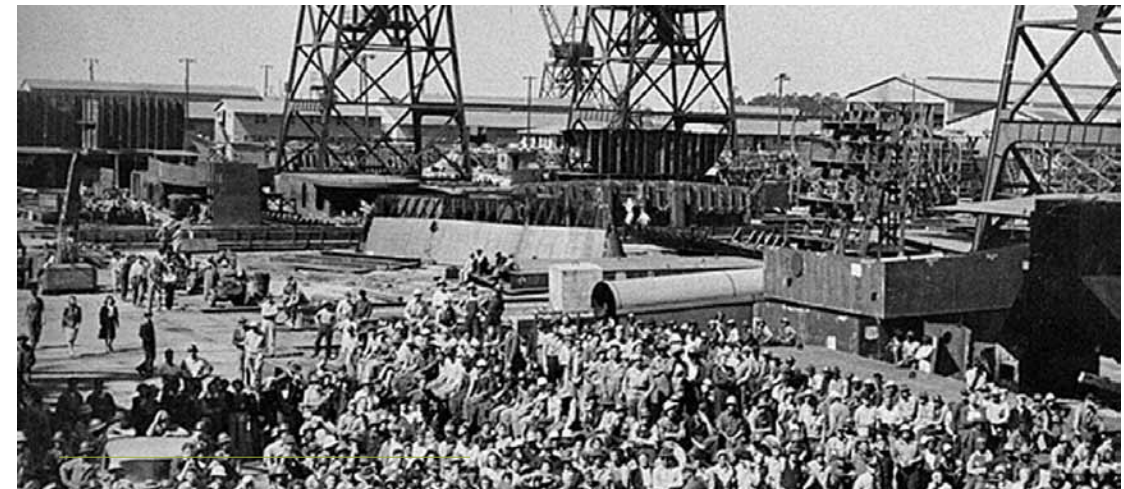
Liberty Ships were manned primarily by merchant seamen, frequently with armed Navy guards, and carried food, fuel, weapons, and other critical supplies throughout the world in support of the war effort.

The only Georgia site selected for Liberty Ship construction was Brunswick. The J. A. Jones Shipyard was built at the southern tip of the Brunswick peninsula, in the area west of the Sidney Lanier Bridge.

It was a massive undertaking. At any time, six ships were under construction. Sixteen thousand workers were employed in the construction of the ships. The workers came from the farms and towns in the area with no background as professional shipbuilders, but they learned.

With a newly-trained workforce, the first six ships completed by the shipyard took from 305 to 331 days from the laying of the keel to launching. As the expertise of the workers grew, most ships were completed in an average of 89 days. The record was 34 days for the SS William F. Jerman in November and December 1944 in response to a challenge.

In November 1944, the United States Maritime Commission asked that each of the shipyards deliver six ships by the end of the year. The workers at Brunswick responded that they would deliver seven. The workers



J. A. JONES CONSTRUCTION CO.

Brunswick, 1943. The crowd gathered at this shipyard was probably on hand for the launching of a ship.

put forth an effort even heartier than usual. Two thousand of them not only worked on Christmas Day to meet their goal, but endorsed their Christmas holiday pay over to the United States Government as a gift to America. By the end of the year, seven ships had been launched.

The Brunswick shipyard produced ninety-nine ships, of which eighty-five were Liberty Ships. The remaining fourteen were a smaller cargo vessel known as a “knot ship” for the convention of naming them for knots. Liberty Ships were named for prominent Americans.

The J. A. Jones Shipyard at Brunswick was closed in 1945 at the end of World War II. The work of the Brunswick shipbuilders and of those who sailed on the ships is commemorated at the Liberty Ship Memorial Plaza at Mary Ross Waterfront Park in Brunswick.

FYI

Liberty Ships were designated EC2-S-C1.

E = Emergency (WW II)

C = Cargo

2 = Size Category
(Waterline 400-450 feet)

S = Steam Power

C1 = Liberty Ship Design

yesterday & today

88

TIDE TABLES,
MAP AND MORE

yesterday & today



1940



Mallory Street Village area, St. Simons Island



1940



Pier and lighthouse, St. Simons Island



1940



Frederica Road, St. Simons Island

Photos courtesy of www.antiquepix.com

89

TIDE TABLES,
MAP AND MORE

yesterday & today



1940



Christ Church of Frederica, St. Simons Island




1940



McKinnon St. Simons Island airport (Photo courtesy of Larry Wade)

STEELE STUDIO
presents their exclusive collection of
Vintage Reproduction Photographs of
OLD ST. SIMONS ISLAND



available online at
WWW.ANTIQUEPIX.COM
and
VILLAGE MEWS
504 Beachview Drive, St. Simons Island, Georgia

Photos courtesy of www.antiquepix.com

Lilly Pulitzer



A LILLY PULITZER® VIA SHOP
...and so much more.

Shops at Sea Island • 600 Sea Island Road • St. Simons Island
(912) 634-8084 • www.cloistercollection.com

tide tables

St. Simons Sound Bar (31.1000° N, 81.3167° W)

JANUARY 2010

SUNDAY	MONDAY	TUESDAY	WEDNESDAY	THURSDAY	FRIDAY	SATURDAY
1 Low 1:58 a.m. High 8:05 a.m. Low 2:39 p.m. High 8:29 p.m.	2 Low 2:51 a.m. High 8:55 a.m. Low 3:28 p.m. High 9:22 p.m.	3 Low 3:42 a.m. High 9:47 a.m. Low 4:16 p.m. High 10:17 p.m.	4 Low 4:34 a.m. High 10:40 a.m. Low 5:04 p.m. High 11:14 p.m.	5 Low 5:28 a.m. High 11:34 a.m. Low 5:54 p.m.	6 High 12:13 a.m. Low 6:24 a.m. High 12:29 p.m. Low 6:47 p.m.	7 High 1:11 a.m. Low 7:26 a.m. High 1:24 p.m. Low 7:44 p.m.
8 High 2:09 a.m. Low 8:31 a.m. High 2:19 p.m. Low 8:44 p.m.	9 High 3:06 a.m. Low 9:36 a.m. High 3:15 p.m. Low 9:44 p.m.	10 High 4:04 a.m. Low 10:35 a.m. High 4:12 p.m. Low 10:40 p.m.	11 High 5:01 a.m. Low 11:29 a.m. High 5:07 p.m. Low 11:32 p.m.	12 High 5:53 a.m. Low 12:18 p.m. High 5:59 p.m. Low 12:20 a.m.	13 High 6:41 a.m. Low 1:03 p.m. High 6:46 p.m.	14 Low 1:05 a.m. High 7:23 a.m. Low 1:45 p.m. High 7:28 p.m.
15 Low 1:46 a.m. High 8:02 a.m. Low 2:24 p.m. High 8:08 p.m.	16 Low 2:25 a.m. High 8:39 a.m. Low 3:00 p.m. High 8:46 p.m.	17 Low 3:02 a.m. High 9:14 a.m. Low 3:34 p.m. High 9:23 p.m.	18 Low 3:38 a.m. High 9:48 a.m. Low 4:08 p.m. High 10:00 p.m.	19 Low 4:13 a.m. High 10:22 a.m. Low 4:42 p.m. High 10:38 p.m.	20 Low 4:51 a.m. High 10:58 a.m. Low 5:17 p.m. High 11:19 p.m.	21 Low 5:32 a.m. High 11:39 a.m. Low 5:57 p.m. High 12:05 a.m.
22 Low 6:19 a.m. High 12:26 p.m. Low 6:44 p.m.	23 High 12:56 a.m. Low 7:16 a.m. High 1:19 p.m. Low 7:39 p.m.	24 High 1:53 a.m. Low 8:23 a.m. High 2:18 p.m. Low 8:43 p.m.	25 High 2:53 a.m. Low 9:33 a.m. High 3:20 p.m. Low 9:48 p.m.	26 High 3:57 a.m. Low 10:39 a.m. High 4:25 p.m. Low 10:51 p.m.	27 High 5:00 a.m. Low 11:39 a.m. High 5:28 p.m. Low 11:51 p.m.	28 High 6:01 a.m. Low 12:35 p.m. High 6:27 p.m.
29 Low 12:48 a.m. High 6:57 a.m. Low 1:28 p.m. High 7:21 p.m.	30 Low 1:43 a.m. High 7:49 a.m. Low 2:18 p.m. High 8:14 p.m.	31 Low 2:36 a.m. High 8:38 a.m. Low 3:06 p.m. High 9:05 p.m.				

91

TIDE TABLES,
MAP AND MORE

tide tables

FEBRUARY 2010

SUNDAY	MONDAY	TUESDAY	WEDNESDAY	THURSDAY	FRIDAY	SATURDAY
	1 Low 3:27 a.m. High 9:28 a.m. Low 3:53 p.m. High 9:58 p.m.	2 Low 4:18 a.m. High 10:18 a.m. Low 4:39 p.m. High 10:51 p.m.	3 Low 5:09 a.m. High 11:09 a.m. Low 5:26 p.m. High 11:46 p.m.	4 Low 6:02 a.m. High 12:02 p.m. Low 6:15 p.m.	5 High 12:42 a.m. Low 6:59 a.m. High 12:56 p.m. Low 7:09 p.m.	6 High 1:39 a.m. Low 8:02 a.m. High 1:51 p.m. Low 8:10 p.m.
7 High 2:37 a.m. Low 9:07 a.m. High 2:47 p.m. Low 9:13 p.m.	8 High 3:36 a.m. Low 10:08 a.m. High 3:44 p.m. Low 10:14 p.m.	9 High 4:34 a.m. Low 11:03 a.m. High 4:41 p.m. Low 11:09 p.m.	10 High 5:29 a.m. Low 11:52 a.m. High 5:35 p.m. Low 11:58 p.m.	11 High 6:18 a.m. Low 12:36 p.m. High 6:23 p.m.	12 Low 12:42 a.m. High 7:00 a.m. Low 1:16 p.m. High 7:06 p.m.	13 Low 1:24 a.m. High 7:39 a.m. Low 1:54 p.m. High 7:46 p.m.
14 Low 2:03 a.m. High 8:15 a.m. Low 2:30 p.m. High 8:22 p.m.	15 Low 2:40 a.m. High 8:48 a.m. Low 3:04 p.m. High 8:56 p.m.	16 Low 3:16 a.m. High 9:20 a.m. Low 3:37 p.m. High 9:30 p.m.	17 Low 3:51 a.m. High 9:51 a.m. Low 4:10 p.m. High 10:04 p.m.	18 Low 4:28 a.m. High 10:24 a.m. Low 4:46 p.m. High 10:42 p.m.	19 Low 5:08 a.m. High 11:03 a.m. Low 5:25 p.m. High 11:27 p.m.	20 Low 5:53 a.m. High 11:50 a.m. Low 6:12 p.m.
21 High 12:20 a.m. Low 6:48 a.m. High 12:46 p.m. Low 7:07 p.m.	22 High 1:20 a.m. Low 7:54 a.m. High 1:49 p.m. Low 8:14 p.m.	23 High 2:25 a.m. Low 9:06 a.m. High 2:55 p.m. Low 9:24 p.m.	24 High 3:32 a.m. Low 10:15 a.m. High 4:03 p.m. Low 10:31 p.m.	25 High 4:38 a.m. Low 11:16 a.m. High 5:09 p.m. Low 11:34 p.m.	26 High 5:40 a.m. Low 12:12 p.m. High 6:09 p.m.	27 Low 12:32 a.m. High 6:37 a.m. Low 1:05 p.m. High 7:04 p.m.
28 Low 1:27 a.m. High 7:29 a.m. Low 1:55 p.m. High 7:56 p.m.						

MARCH 2010

SUNDAY	MONDAY	TUESDAY	WEDNESDAY	THURSDAY	FRIDAY	SATURDAY
	1 Low 2:48 a.m. High 8:39 a.m. Low 3:10 p.m. High 9:07 p.m.	2 Low 3:38 a.m. High 9:27 a.m. Low 3:56 p.m. High 9:57 p.m.	3 Low 4:27 a.m. High 10:15 a.m. Low 4:40 p.m. High 10:47 p.m.	4 Low 5:16 a.m. High 11:04 a.m. Low 5:25 p.m. High 11:39 p.m.	5 Low 6:05 a.m. High 11:55 a.m. Low 6:12 p.m.	6 High 12:33 a.m. Low 6:58 a.m. High 12:48 p.m. Low 7:03 p.m.
7 High 1:28 a.m. Low 7:56 a.m. High 1:43 p.m. Low 8:01 p.m.	8 High 2:26 a.m. Low 8:59 a.m. High 2:39 p.m. Low 9:06 p.m.	9 High 3:24 a.m. Low 10:01 a.m. High 3:36 p.m. Low 10:10 p.m.	10 High 4:22 a.m. Low 10:57 a.m. High 4:33 p.m. Low 11:08 p.m.	11 High 5:17 a.m. Low 11:45 a.m. High 5:27 p.m. Low 11:58 p.m.	12 High 6:07 a.m. Low 12:29 p.m. High 6:16 p.m.	13 Low 12:44 a.m. High 6:51 a.m. Low 1:09 p.m. High 7:00 p.m.
14 Low 1:26 a.m. High 8:31 a.m. Low 2:47 p.m. High 8:40 p.m.	15 Low 3:06 a.m. High 9:07 a.m. Low 3:24 p.m. High 9:16 p.m.	16 Low 3:44 a.m. High 9:41 a.m. Low 3:59 p.m. High 9:50 p.m.	17 Low 4:22 a.m. High 10:14 a.m. Low 4:35 p.m. High 10:23 p.m.	18 Low 4:59 a.m. High 10:46 a.m. Low 5:11 p.m. High 10:58 p.m.	19 Low 5:37 a.m. High 11:21 a.m. Low 5:49 p.m. High 11:37 p.m.	20 Low 6:18 a.m. High 12:02 p.m. Low 6:30 p.m.
21 High 12:24 a.m. Low 7:04 a.m. High 12:51 p.m. Low 7:18 p.m.	22 High 1:19 a.m. Low 7:59 a.m. High 1:50 p.m. Low 8:15 p.m.	23 High 2:22 a.m. Low 9:02 a.m. High 2:55 p.m. Low 9:23 p.m.	24 High 3:27 a.m. Low 10:12 a.m. High 4:02 p.m. Low 10:35 p.m.	25 High 4:33 a.m. Low 11:20 a.m. High 5:09 p.m. Low 11:43 p.m.	26 High 5:38 a.m. Low 12:20 p.m. High 6:13 p.m.	27 Low 12:46 a.m. High 6:39 a.m. Low 1:15 p.m. High 7:13 p.m.
28 Low 1:44 a.m. High 7:36 a.m. Low 2:07 p.m. High 8:07 p.m.	29 Low 2:38 a.m. High 8:27 a.m. Low 2:56 p.m. High 8:58 p.m.	30 Low 3:31 a.m. High 9:16 a.m. Low 3:44 p.m. High 9:45 p.m.	31 Low 4:20 a.m. High 10:03 a.m. Low 4:29 p.m. High 10:32 p.m.			

◀ Lilly Pulitzer, Cloister Collection (Please see ad on page 51)

WelcomeToStSimonsIsland.com

APRIL 2010

SUNDAY	MONDAY	TUESDAY	WEDNESDAY	THURSDAY	FRIDAY	SATURDAY
				1 Low 5:08 a.m. High 10:50 a.m. Low 5:14 p.m. High 11:20 p.m.	2 Low 5:54 a.m. High 11:37 a.m. Low 5:57 p.m.	3 High 12:09 a.m. Low 6:41 a.m. High 12:27 p.m. Low 6:42 p.m.
4 High 1:01 a.m. Low 7:29 a.m. High 1:19 p.m. Low 7:29 p.m.	5 High 1:55 a.m. Low 8:21 a.m. High 2:14 p.m. Low 8:22 p.m.	6 High 2:50 a.m. Low 9:18 a.m. High 3:08 p.m. Low 9:24 p.m.	7 High 3:46 a.m. Low 10:17 a.m. High 4:04 p.m. Low 10:30 p.m.	8 High 4:41 a.m. Low 11:12 a.m. High 4:58 p.m. Low 11:30 p.m.	9 High 5:34 a.m. Low 12:01 p.m. High 5:51 p.m.	10 Low 12:23 a.m. High 6:25 a.m. Low 12:45 p.m. High 6:41 p.m.
11 Low 1:11 a.m. High 7:11 a.m. Low 1:27 p.m. High 7:26 p.m.	12 Low 1:50 a.m. High 7:54 a.m. Low 1:27 p.m. High 7:58 p.m.	13 Low 2:38 a.m. High 8:34 a.m. Low 2:47 p.m. High 8:45 p.m.	14 Low 3:19 a.m. High 9:11 a.m. Low 3:27 p.m. High 9:21 p.m.	15 Low 4:00 a.m. High 9:46 a.m. Low 4:06 p.m. High 9:57 p.m.	16 Low 4:40 a.m. High 10:23 a.m. Low 4:47 p.m. High 10:36 p.m.	17 Low 5:22 a.m. High 11:02 a.m. Low 5:29 p.m. High 11:19 p.m.
18 Low 6:06 a.m. High 11:47 a.m. Low 6:14 p.m.	19 High 12:10 a.m. Low 6:53 a.m. High 12:42 p.m. Low 7:05 p.m.	20 High 1:07 a.m. Low 7:47 a.m. High 1:43 p.m. Low 8:03 p.m.	21 High 2:09 a.m. Low 8:48 a.m. High 2:47 p.m. Low 9:10 p.m.	22 High 3:12 a.m. Low 9:53 a.m. High 3:51 p.m. Low 10:20 p.m.	23 High 4:14 a.m. Low 10:56 a.m. High 4:54 p.m. Low 11:27 p.m.	24 High 5:15 a.m. Low 11:55 a.m. High 5:56 p.m.
25 Low 12:29 a.m. High 6:14 a.m. Low 12:49 p.m. High 6:53 p.m.	26 Low 1:27 a.m. High 7:10 a.m. Low 1:40 p.m. High 7:47 p.m.	27 Low 2:21 a.m. High 8:03 a.m. Low 2:30 p.m. High 8:36 p.m.	28 Low 3:12 a.m. High 8:52 a.m. Low 3:18 p.m. High 9:23 p.m.	29 Low 4:01 a.m. High 9:39 a.m. Low 4:04 p.m. High 10:09 p.m.	30 Low 4:48 a.m. High 10:24 a.m. Low 4:48 p.m. High 10:54 p.m.	

92

TIDE TABLES,
MAP AND MORE

tide tables

MAY 2010

SUNDAY	MONDAY	TUESDAY	WEDNESDAY	THURSDAY	FRIDAY	SATURDAY
						1 Low 5:32 a.m. High 11:11 a.m. Low 5:31 p.m. High 11:41 p.m.
2 Low 6:16 a.m. High 11:59 a.m. Low 6:13 p.m.	3 High 12:30 a.m. Low 7:00 a.m. High 12:50 p.m. Low 6:57 p.m.	4 High 1:21 a.m. Low 7:46 a.m. High 1:43 p.m. Low 7:45 p.m.	5 High 2:13 a.m. Low 8:35 a.m. High 2:36 p.m. Low 8:40 p.m.	6 High 3:04 a.m. Low 9:27 a.m. High 3:28 p.m. Low 9:42 p.m.	7 High 3:55 a.m. Low 10:20 a.m. High 4:19 p.m. Low 10:44 p.m.	8 High 4:46 a.m. Low 11:10 a.m. High 5:10 p.m. Low 11:40 p.m.
9 High 5:36 a.m. Low 11:57 a.m. High 5:59 p.m.	10 Low 12:32 a.m. High 6:25 a.m. Low 12:42 p.m. High 6:46 p.m.	11 Low 1:20 a.m. High 7:12 a.m. Low 1:27 p.m. High 7:30 p.m.	12 Low 2:06 a.m. High 7:56 a.m. Low 2:11 p.m. High 8:13 p.m.	13 Low 2:52 a.m. High 8:39 a.m. Low 2:56 p.m. High 8:54 p.m.	14 Low 3:37 a.m. High 9:20 a.m. Low 3:41 p.m. High 9:36 p.m.	15 Low 4:22 a.m. High 10:02 a.m. Low 4:26 p.m. High 10:20 p.m.
16 Low 5:07 a.m. High 10:47 a.m. Low 5:13 p.m. High 11:08 p.m.	17 Low 5:54 a.m. High 11:39 a.m. Low 6:02 p.m.	18 High 12:01 a.m. Low 6:43 a.m. High 12:36 p.m. Low 6:55 p.m.	19 High 12:58 a.m. Low 7:35 a.m. High 1:38 p.m. Low 7:53 p.m.	20 High 1:57 a.m. Low 8:32 a.m. High 2:40 p.m. Low 8:58 p.m.	21 High 2:56 a.m. Low 9:31 a.m. High 3:40 p.m. Low 10:05 p.m.	22 High 3:54 a.m. Low 10:31 a.m. High 4:39 p.m. Low 11:11 p.m.
23 High 4:52 a.m. Low 11:29 a.m. High 5:37 p.m.	24 Low 12:12 a.m. High 5:49 a.m. Low 12:23 p.m. High 6:33 p.m.	25 Low 1:09 a.m. High 6:45 a.m. Low 1:15 p.m. High 7:26 p.m.	26 Low 2:02 a.m. High 7:38 a.m. Low 2:05 p.m. High 8:16 p.m.	27 Low 2:53 a.m. High 8:28 a.m. Low 2:53 p.m. High 9:03 p.m.	28 Low 3:41 a.m. High 9:15 a.m. Low 3:39 p.m. High 9:47 p.m.	29 Low 4:26 a.m. High 10:00 a.m. Low 4:24 p.m. High 10:31 p.m.
30 Low 5:09 a.m. High 10:45 a.m. Low 5:06 p.m. High 11:15 p.m.	31 Low 5:50 a.m. High 11:32 a.m. Low 5:46 p.m.					

JUNE 2010

SUNDAY	MONDAY	TUESDAY	WEDNESDAY	THURSDAY	FRIDAY	SATURDAY
		1 High 12:00 a.m. Low 6:30 a.m. High 12:20 p.m. Low 6:27 p.m.	2 High 12:47 a.m. Low 7:10 a.m. High 1:10 p.m. Low 7:11 p.m.	3 High 1:34 a.m. Low 7:52 a.m. High 2:00 p.m. Low 7:59 p.m.	4 High 2:21 a.m. Low 8:38 a.m. High 2:49 p.m. Low 8:54 p.m.	5 High 3:09 a.m. Low 9:26 a.m. High 3:37 p.m. Low 9:54 p.m.
6 High 3:57 a.m. Low 10:17 a.m. High 4:26 p.m. Low 10:54 p.m.	7 High 4:46 a.m. Low 11:08 a.m. High 5:15 p.m. Low 11:50 p.m.	8 High 5:37 a.m. Low 11:58 a.m. High 6:04 p.m.	9 Low 12:43 a.m. High 6:28 a.m. Low 12:48 p.m. High 6:53 p.m.	10 Low 1:34 a.m. High 7:18 a.m. Low 1:37 p.m. High 7:42 p.m.	11 Low 2:25 a.m. High 8:07 a.m. Low 2:28 p.m. High 8:29 p.m.	12 Low 3:14 a.m. High 8:55 a.m. Low 3:18 p.m. High 9:17 p.m.
13 Low 4:03 a.m. High 9:43 a.m. Low 4:08 p.m. High 10:05 p.m.	14 Low 4:51 a.m. High 10:34 a.m. Low 4:59 p.m. High 10:56 p.m.	15 Low 5:39 a.m. High 11:29 a.m. Low 5:51 p.m. High 11:50 p.m.	16 Low 6:28 a.m. High 12:27 p.m. Low 6:44 p.m.	17 High 12:46 a.m. Low 7:18 a.m. High 1:28 p.m. Low 7:42 p.m.	18 High 1:42 a.m. Low 8:11 a.m. High 2:27 p.m. Low 8:43 p.m.	19 High 2:38 a.m. Low 9:08 a.m. High 3:25 p.m. Low 9:49 p.m.
20 High 3:34 a.m. Low 10:06 a.m. High 4:21 p.m. Low 10:53 p.m.	21 High 4:29 a.m. Low 11:03 a.m. High 5:17 p.m. Low 11:54 p.m.	22 High 5:25 a.m. Low 11:59 a.m. High 6:13 p.m.	23 Low 12:50 a.m. High 6:21 a.m. Low 12:51 p.m. High 7:06 p.m.	24 Low 1:43 a.m. High 7:14 a.m. Low 1:42 p.m. High 7:57 p.m.	25 Low 2:33 a.m. High 8:05 a.m. Low 2:31 p.m. High 8:43 p.m.	26 Low 3:20 a.m. High 8:52 a.m. Low 3:17 p.m. High 9:27 p.m.
27 Low 4:03 a.m. High 9:37 a.m. Low 4:00 p.m. High 10:08 p.m.	28 Low 4:44 a.m. High 10:20 a.m. Low 4:41 p.m. High 10:49 p.m.	29 Low 5:22 a.m. High 11:03 a.m. Low 5:20 p.m. High 11:29 p.m.	30 Low 5:59 a.m. High 11:48 a.m. Low 5:59 p.m.			

JULY 2010

SUNDAY	MONDAY	TUESDAY	WEDNESDAY	THURSDAY	FRIDAY	SATURDAY
				1 High 12:11 a.m. Low 6:35 a.m. High 12:33 p.m. Low 6:39 p.m.	2 High 12:53 a.m. Low 7:12 a.m. High 1:19 p.m. Low 7:22 p.m.	3 High 1:37 a.m. Low 7:53 a.m. High 2:06 p.m. Low 8:11 p.m.
4 High 2:22 a.m. Low 8:37 a.m. High 2:53 p.m. Low 9:06 p.m.	5 High 3:09 a.m. Low 9:28 a.m. High 3:41 p.m. Low 10:07 p.m.	6 High 3:59 a.m. Low 10:22 a.m. High 4:31 p.m. Low 11:09 p.m.	7 High 4:52 a.m. Low 11:18 a.m. High 5:25 p.m.	8 Low 12:08 a.m. High 5:47 a.m. Low 12:13 p.m. High 6:19 p.m.	9 Low 1:04 a.m. High 6:43 a.m. Low 1:09 p.m. High 7:14 p.m.	10 Low 1:58 a.m. High 7:39 a.m. Low 2:04 p.m. High 8:07 p.m.
11 Low 2:51 a.m. High 8:32 a.m. Low 2:58 p.m. High 8:59 p.m.	12 Low 3:42 a.m. High 9:25 a.m. Low 3:52 p.m. High 9:49 p.m.	13 Low 4:31 a.m. High 10:18 a.m. Low 4:44 p.m. High 10:41 p.m.	14 Low 5:20 a.m. High 11:13 a.m. Low 5:37 p.m. High 11:33 p.m.	15 Low 6:08 a.m. High 12:11 p.m. Low 6:30 p.m.	16 High 12:27 a.m. Low 6:56 a.m. High 1:10 p.m. Low 7:26 p.m.	17 High 1:23 a.m. Low 7:47 a.m. High 2:08 p.m. Low 8:26 p.m.
18 High 2:18 a.m. Low 8:42 a.m. High 3:05 p.m. Low 9:29 p.m.	19 High 3:13 a.m. Low 9:40 a.m. High 4:01 p.m. Low 10:33 p.m.	20 High 4:07 a.m. Low 10:39 a.m. High 4:57 p.m. Low 11:34 p.m.	21 High 5:03 a.m. Low 11:37 a.m. High 5:53 p.m.	22 Low 12:30 a.m. High 5:58 a.m. Low 12:31 p.m. High 6:47 p.m.	23 Low 1:22 a.m. High 6:52 a.m. Low 1:22 p.m. High 7:37 p.m.	24 Low 2:10 a.m. High 7:43 a.m. Low 2:10 p.m. High 8:23 p.m.
25 Low 2:54 a.m. High 8:29 a.m. Low 2:55 p.m. High 9:05 p.m.	26 Low 3:36 a.m. High 9:13 a.m. Low 3:37 p.m. High 9:44 p.m.	27 Low 4:15 a.m. High 9:54 a.m. Low 4:17 p.m. High 10:21 p.m.	28 Low 4:51 a.m. High 10:34 a.m. Low 4:55 p.m. High 10:58 p.m.	29 Low 5:25 a.m. High 11:14 a.m. Low 5:32 p.m. High 11:34 p.m.	30 Low 5:59 a.m. High 11:54 a.m. Low 6:09 p.m.	31 High 12:12 a.m. Low 6:34 a.m. High 12:36 p.m. Low 6:50 p.m.

93

TIDE TABLES,
MAP AND MORE

tide tables

AUGUST 2010

SUNDAY	MONDAY	TUESDAY	WEDNESDAY	THURSDAY	FRIDAY	SATURDAY
1 High 12:53 a.m. Low 7:13 a.m. High 1:21 p.m. Low 7:34 p.m.	2 High 1:37 a.m. Low 7:56 a.m. High 2:08 p.m. Low 8:27 p.m.	3 High 2:26 a.m. Low 8:46 a.m. High 2:59 p.m. Low 9:27 p.m.	4 High 3:19 a.m. Low 9:43 a.m. High 3:54 p.m. Low 10:33 p.m.	5 High 4:15 a.m. Low 10:45 a.m. High 4:52 p.m. Low 11:37 p.m.	6 High 5:15 a.m. Low 11:46 a.m. High 5:51 p.m.	7 Low 12:36 a.m. High 6:16 a.m. Low 12:46 p.m. High 6:50 p.m.
8 Low 1:33 a.m. High 7:15 a.m. Low 1:43 p.m. High 7:46 p.m.	9 Low 2:26 a.m. High 8:12 a.m. Low 2:40 p.m. High 8:39 p.m.	10 Low 3:18 a.m. High 9:06 a.m. Low 3:35 p.m. High 9:30 p.m.	11 Low 4:07 a.m. High 9:59 a.m. Low 4:28 p.m. High 10:20 p.m.	12 Low 4:56 a.m. High 10:53 a.m. Low 5:21 p.m. High 11:12 p.m.	13 Low 5:43 a.m. High 11:49 a.m. Low 6:13 p.m.	14 High 12:05 a.m. Low 6:31 a.m. High 12:46 p.m. Low 7:07 p.m.
15 High 12:59 a.m. Low 7:21 a.m. High 1:44 p.m. Low 8:04 p.m.	16 High 1:55 a.m. Low 8:15 a.m. High 2:42 p.m. Low 9:06 p.m.	17 High 2:51 a.m. Low 9:13 a.m. High 3:39 p.m. Low 10:10 p.m.	18 High 3:46 a.m. Low 10:15 a.m. High 4:35 p.m. Low 11:11 p.m.	19 High 4:41 a.m. Low 11:15 a.m. High 5:31 p.m.	20 Low 12:07 a.m. High 5:36 a.m. Low 12:10 p.m. High 6:25 p.m.	21 Low 12:57 a.m. High 6:30 a.m. Low 1:01 p.m. High 7:14 p.m.
22 Low 1:42 a.m. High 7:20 a.m. Low 1:47 p.m. High 7:58 p.m.	23 Low 2:24 a.m. High 8:05 a.m. Low 2:31 p.m. High 8:39 p.m.	24 Low 3:04 a.m. High 8:47 a.m. Low 3:12 p.m. High 9:16 p.m.	25 Low 3:41 a.m. High 9:27 a.m. Low 3:52 p.m. High 9:52 p.m.	26 Low 4:16 a.m. High 10:04 a.m. Low 4:29 p.m. High 10:26 p.m.	27 Low 4:51 a.m. High 10:39 a.m. Low 5:06 p.m. High 11:00 p.m.	28 Low 5:25 a.m. High 11:15 a.m. Low 5:43 p.m. High 11:34 p.m.
29 Low 6:00 a.m. High 11:54 a.m. Low 6:22 p.m.	30 High 12:13 a.m. Low 6:39 a.m. High 12:38 p.m. Low 7:06 p.m.	31 High 12:58 a.m. Low 7:22 a.m. High 1:29 p.m. Low 7:57 p.m.				

SEPTEMBER 2010

SUNDAY	MONDAY	TUESDAY	WEDNESDAY	THURSDAY	FRIDAY	SATURDAY
			1 High 1:50 a.m. Low 8:13 a.m. High 2:25 p.m. Low 8:57 p.m.	2 High 2:48 a.m. Low 9:13 a.m. High 3:24 p.m. Low 10:04 p.m.	3 High 3:49 a.m. Low 10:19 a.m. High 4:25 p.m. Low 11:10 p.m.	4 High 4:51 a.m. Low 11:25 a.m. High 5:27 p.m.
5 Low 12:11 a.m. High 5:54 a.m. Low 12:27 p.m. High 6:27 p.m.	6 Low 1:07 a.m. High 6:55 a.m. Low 1:26 p.m. High 7:24 p.m.	7 Low 2:01 a.m. High 7:52 a.m. Low 2:23 p.m. High 8:17 p.m.	8 Low 2:52 a.m. High 8:46 a.m. Low 3:17 p.m. High 9:08 p.m.	9 Low 3:41 a.m. High 9:38 a.m. Low 4:11 p.m. High 9:57 p.m.	10 Low 4:30 a.m. High 10:30 a.m. Low 5:02 p.m. High 10:47 p.m.	11 Low 5:17 a.m. High 11:23 a.m. Low 5:54 p.m. High 11:39 p.m.
12 Low 6:05 a.m. High 12:19 p.m. Low 6:46 p.m.	13 High 12:33 a.m. Low 6:54 a.m. High 1:17 p.m. Low 7:40 p.m.	14 High 1:30 a.m. Low 7:46 a.m. High 2:15 p.m. Low 8:38 p.m.	15 High 2:26 a.m. Low 8:44 a.m. High 3:13 p.m. Low 9:41 p.m.	16 High 3:22 a.m. Low 9:47 a.m. High 4:09 p.m. Low 10:42 p.m.	17 High 4:17 a.m. Low 10:49 a.m. High 5:03 p.m. Low 11:37 p.m.	18 High 5:11 a.m. Low 11:46 a.m. High 5:55 p.m.
19 Low 12:25 a.m. High 6:04 a.m. Low 12:36 p.m. High 6:43 p.m.	20 Low 1:09 a.m. High 6:53 a.m. Low 1:22 p.m. High 7:27 p.m.	21 Low 1:49 a.m. High 7:38 a.m. Low 2:05 p.m. High 8:08 p.m.	22 Low 2:28 a.m. High 8:19 a.m. Low 2:46 p.m. High 8:46 p.m.	23 Low 3:05 a.m. High 8:57 a.m. Low 3:26 p.m. High 9:22 p.m.	24 Low 3:42 a.m. High 9:33 a.m. Low 4:04 p.m. High 9:56 p.m.	25 Low 4:18 a.m. High 10:08 a.m. Low 4:42 p.m. High 10:29 p.m.
26 Low 4:54 a.m. High 10:43 a.m. Low 5:20 p.m. High 11:03 p.m.	27 Low 5:31 a.m. High 11:21 a.m. Low 6:00 p.m. High 11:41 p.m.	28 Low 6:12 a.m. High 12:06 p.m. Low 6:45 p.m.	29 High 12:28 a.m. Low 6:57 a.m. High 12:59 p.m. Low 7:35 p.m.	30 High 1:25 a.m. Low 7:50 a.m. High 1:59 p.m.		

OCTOBER 2010

SUNDAY	MONDAY	TUESDAY	WEDNESDAY	THURSDAY	FRIDAY	SATURDAY
					1 High 2:27 a.m. Low 8:52 a.m. High 3:01 p.m. Low 9:40 p.m.	2 High 3:31 a.m. Low 10:00 a.m. High 4:03 p.m. Low 10:46 p.m.
3 High 4:34 a.m. Low 11:07 a.m. High 5:04 p.m. Low 11:46 p.m.	4 High 5:37 a.m. Low 12:11 p.m. High 6:04 p.m.	5 Low 12:42 a.m. High 6:37 a.m. Low 1:10 p.m. High 7:01 p.m.	6 Low 1:35 a.m. High 7:33 a.m. Low 2:06 p.m. High 7:54 p.m.	7 Low 2:26 a.m. High 8:26 a.m. Low 3:00 p.m. High 8:45 p.m.	8 Low 3:15 a.m. High 9:17 a.m. Low 3:53 p.m. High 9:34 p.m.	9 Low 4:04 a.m. High 10:07 a.m. Low 4:44 p.m. High 10:23 p.m.
10 Low 4:51 a.m. High 10:58 a.m. Low 5:33 p.m. High 11:13 p.m.	11 Low 5:10 a.m. High 11:28 a.m. Low 5:54 p.m. High 11:44 p.m.	12 Low 5:58 a.m. High 12:24 p.m. Low 6:44 p.m.	13 High 12:39 a.m. Low 6:47 a.m. High 1:21 p.m. Low 7:38 p.m.	14 High 1:35 a.m. Low 7:42 a.m. High 2:18 p.m. Low 8:36 p.m.	15 High 2:31 a.m. Low 8:42 a.m. High 3:12 p.m. Low 9:34 p.m.	16 High 3:25 a.m. Low 9:45 a.m. High 4:04 p.m. Low 10:28 p.m.
17 High 4:18 a.m. Low 10:44 a.m. High 4:54 p.m. Low 11:17 p.m.	18 High 5:09 a.m. Low 11:37 a.m. High 5:43 p.m. Low 12:00 a.m.	19 High 5:58 a.m. Low 12:24 p.m. High 6:28 p.m.	20 Low 12:41 a.m. High 6:44 a.m. Low 1:08 p.m. High 7:11 p.m.	21 Low 1:21 a.m. High 7:26 a.m. Low 1:50 p.m. High 7:52 p.m.	22 Low 2:01 a.m. High 8:05 a.m. Low 2:32 p.m. High 8:30 p.m.	23 Low 2:40 a.m. High 8:42 a.m. Low 3:12 p.m. High 9:06 p.m.
24 Low 3:19 a.m. High 9:18 a.m. Low 3:52 p.m. High 9:41 p.m.	25 Low 3:59 a.m. High 9:55 a.m. Low 4:32 p.m. High 10:17 p.m.	26 Low 4:40 a.m. High 10:36 a.m. Low 5:15 p.m. High 10:58 p.m.	27 Low 5:23 a.m. High 11:23 a.m. Low 6:00 p.m. High 11:48 p.m.	28 Low 6:11 a.m. High 12:17 p.m. Low 6:51 p.m.	29 High 12:47 a.m. Low 7:05 a.m. High 1:18 p.m. Low 7:47 p.m.	30 High 1:51 a.m. Low 8:07 a.m. High 2:19 p.m. Low 8:50 p.m.
31 High 2:55 a.m. Low 9:15 a.m. High 3:20 p.m. Low 9:53 p.m.						

TIDE TABLES,
MAP AND MORE

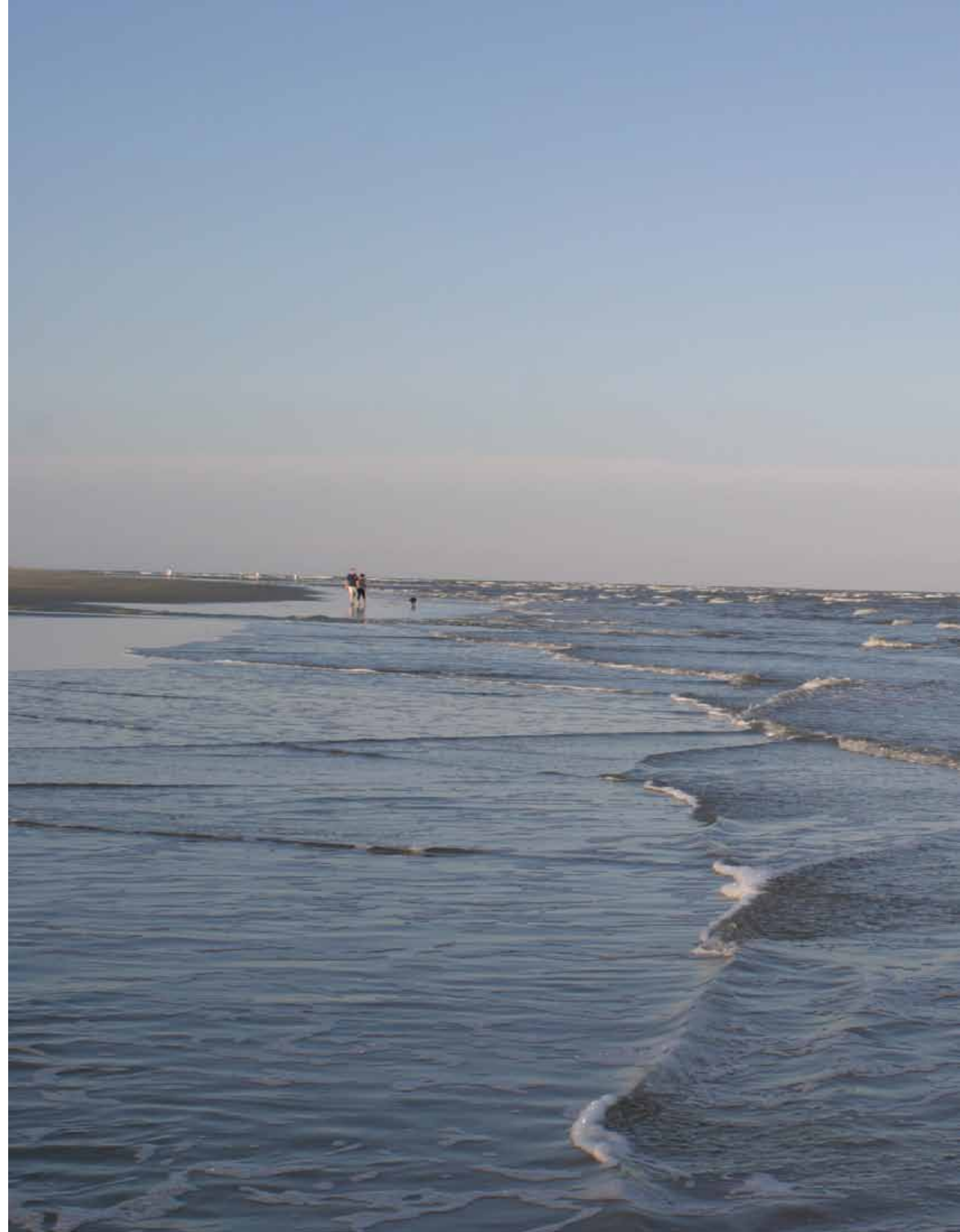
tide tables

NOVEMBER 2010

SUNDAY	MONDAY	TUESDAY	WEDNESDAY	THURSDAY	FRIDAY	SATURDAY
1 High 3:57 a.m. Low 10:23 a.m. High 4:20 p.m. Low 10:53 p.m.	2 High 4:58 a.m. Low 11:27 a.m. High 5:18 p.m. Low 11:49 p.m.	3 High 5:57 a.m. Low 12:26 p.m. High 6:15 p.m.	4 Low 12:42 a.m. High 6:53 a.m. Low 1:22 p.m. High 7:10 p.m.	5 Low 1:33 a.m. High 7:45 a.m. Low 2:15 p.m. High 8:01 p.m.	6 Low 2:23 a.m. High 8:36 a.m. Low 3:07 p.m. High 8:50 p.m.	7 Low 2:12 a.m. High 8:24 a.m. Low 2:56 p.m. High 8:38 p.m.
8 Low 2:59 a.m. High 9:13 a.m. Low 3:43 p.m. High 9:26 p.m.	9 Low 3:45 a.m. High 10:02 a.m. Low 4:30 p.m. High 10:16 p.m.	10 Low 4:31 a.m. High 10:53 a.m. Low 5:15 p.m. High 11:08 p.m.	11 Low 5:16 a.m. High 11:46 a.m. Low 6:03 p.m.	12 High 12:02 a.m. Low 6:05 a.m. High 12:39 p.m. Low 6:52 p.m.	13 High 12:56 a.m. Low 6:59 a.m. High 1:30 p.m. Low 7:45 p.m.	14 High 1:49 a.m. Low 7:59 a.m. High 2:20 p.m. Low 8:37 p.m.
15 High 2:40 a.m. Low 9:00 a.m. High 3:09 p.m. Low 9:28 p.m.	16 High 3:31 a.m. Low 9:57 a.m. High 3:58 p.m. Low 10:14 p.m.	17 High 4:20 a.m. Low 10:48 a.m. High 4:47 p.m. Low 10:59 p.m.	18 High 5:08 a.m. Low 11:35 a.m. High 5:34 p.m. Low 11:43 p.m.	19 High 5:53 a.m. Low 12:21 p.m. High 6:18 p.m.	20 Low 12:26 a.m. High 6:35 a.m. Low 1:05 p.m. High 7:00 p.m.	21 Low 1:10 a.m. High 7:16 a.m. Low 1:49 p.m. High 7:40 p.m.
22 Low 1:53 a.m. High 7:56 a.m. Low 2:32 p.m. High 8:19 p.m.	23 Low 2:38 a.m. High 8:37 a.m. Low 3:16 p.m. High 9:00 p.m.	24 Low 3:22 a.m. High 9:21 a.m. Low 4:00 p.m. High 9:45 p.m.	25 Low 4:08 a.m. High 10:10 a.m. Low 4:46 p.m. High 10:37 p.m.	26 Low 4:58 a.m. High 11:03 a.m. Low 5:35 p.m. High 11:36 p.m.	27 Low 5:52 a.m. High 12:01 p.m. Low 6:28 p.m.	28 High 12:38 a.m. Low 6:52 a.m. High 1:00 p.m. Low 7:26 p.m.
29 High 1:40 a.m. Low 7:54 a.m. High 1:58 p.m. Low 8:27 p.m.	30 High 2:40 a.m. Low 9:07 a.m. High 2:57 p.m. Low 9:27 p.m.					

DECEMBER 2010

SUNDAY	MONDAY	TUESDAY	WEDNESDAY	THURSDAY	FRIDAY	SATURDAY
		1 High 3:40 a.m. Low 10:11 a.m. High 3:56 p.m. Low 10:25 p.m.	2 High 4:40 a.m. Low 11:11 a.m. High 4:54 p.m. Low 11:20 p.m.	3 High 5:36 a.m. Low 12:07 p.m. High 5:49 p.m.	4 Low 12:12 a.m. High 6:30 a.m. Low 12:59 p.m. High 6:41 p.m.	5 Low 1:03 a.m. High 7:20 a.m. Low 1:49 p.m. High 7:31 p.m.
6 Low 1:52 a.m. High 8:07 a.m. Low 2:37 p.m. High 8:17 p.m.	7 Low 2:38 a.m. High 8:53 a.m. Low 3:22 p.m. High 9:03 p.m.	8 Low 3:23 a.m. High 9:37 a.m. Low 4:04 p.m. High 9:48 p.m.	9 Low 4:05 a.m. High 10:22 a.m. Low 4:45 p.m. High 10:35 p.m.	10 Low 4:46 a.m. High 11:08 a.m. Low 5:25 p.m. High 11:25 p.m.	11 Low 5:28 a.m. High 11:55 a.m. Low 6:07 p.m.	12 High 12:15 a.m. Low 6:14 a.m. High 12:43 p.m. Low 6:51 p.m.
13 High 1:05 a.m. Low 7:06 a.m. High 1:31 p.m. Low 7:39 p.m.	14 High 1:55 a.m. Low 8:05 a.m. High 2:20 p.m. Low 8:31 p.m.	15 High 2:45 a.m. Low 9:07 a.m. High 3:10 p.m. Low 9:24 p.m.	16 High 3:36 a.m. Low 10:05 a.m. High 4:02 p.m. Low 10:15 p.m.	17 High 4:27 a.m. Low 10:59 a.m. High 4:54 p.m. Low 11:06 p.m.	18 High 5:18 a.m. Low 11:50 a.m. High 5:44 p.m. Low 11:55 p.m.	19 High 6:06 a.m. Low 12:38 p.m. High 6:31 p.m.
20 Low 12:43 a.m. High 6:53 a.m. Low 1:26 p.m. High 7:16 p.m.	21 Low 1:31 a.m. High 7:38 a.m. Low 2:12 p.m. High 8:00 p.m.	22 Low 2:19 a.m. High 8:22 a.m. Low 2:58 p.m. High 8:45 p.m.	23 Low 3:07 a.m. High 9:08 a.m. Low 3:43 p.m. High 9:33 p.m.	24 Low 3:55 a.m. High 9:56 a.m. Low 4:29 p.m. High 10:25 p.m.	25 Low 4:45 a.m. High 10:48 a.m. Low 5:16 p.m. High 11:22 p.m.	26 Low 5:38 a.m. High 11:43 a.m. Low 6:06 p.m.
27 High 12:22 a.m. Low 6:37 a.m. High 12:40 p.m. Low 7:01 p.m.	28 High 1:22 a.m. Low 7:41 a.m. High 1:37 p.m. Low 8:00 p.m.	29 High 2:22 a.m. Low 8:48 a.m. High 2:35 p.m. Low 9:02 p.m.	30 High 3:22 a.m. Low 9:54 a.m. High 3:34 p.m. Low 10:03 p.m.	31 High 4:23 a.m. Low 10:55 a.m. High 4:34 p.m.		





st. simons island map

1 The Village Pier

A.W. Jones Center	43
Brogen's at the Pier	74
The Condo Hut	11
Frederica Station	18
Georgia Sea Grill	73
Golden Isles Bracelet Co.	64
High Tides Golf Carts	32
Meo's Suite	53
Midnight Blue	52
Neptune Park Fun Zone	15
Ocean Motion	10
SouthEast Adventure Outfitters	20
St. Simons Island Lighthouse	39
St. Simons Trolley	36
Sancastle	77
Waterfront Gifts	xx

2 Ocean Boulevard

Blue Dolphin Restaurant	79
Boulevard Café	76
The Club of St. Simons	8
Coast Guard Station / Maritime Center	43
The Crab Trap	76
Gould's Inlet	12
The King and Prince Beach & Golf Resort	79
Massengale Park	12
Ocean Motion	10

3 South West

Epworth By The Sea	41
Immediate Care Center	60

4 West Demere Road

Georgia Coast Realty	13
Locos	75
St. Simons Island Fitness Center	24

5 Retreat Village

(Winn Dixie Shopping Center)	
Kobé	74
Pat's Hallmark Shop	57

6 Around the Airport

Floor Decor	58
Seaside Home	58

7 Redfern Village

Accents Marketplace	55
Bubba Garcia's	72
Catch 228	77
Fancy Q	70
Gnat's Landing	68, 72
Low Country Walk	61
Massages by Denise	32
McRobins	52
Redfern Jewlers	64
Tommy Lee Carpet	61
Wake Up	17

8 Shops at Sea Island

Beecher's	52
Cloister Collection	51
Gentlemen's Outfitters	48, 55
Georgia Theatre Company	16
Goodstein, Parker Gallery	66
Halyards	71
Island D-Spa	27
Joseph Jewelers 33, Back,	63
Tramici	71

9 Frederica Rd.-West

Anderson Fine Art Gallery	65
Bienvenue	30
Café Frederica	71
Delaney's Bistro	70
Evelyne Talman	30, 34, 50
Moncrief's	53
Planters Exchange	62
Sal's Pizzeria	75
Steed Antiques	32, 60
Tamary's	53

10 Frederica Rd.-East

Bennie's Red Barn	59
M.J. Landis	54
Left Bank Art Gallery	1, 67

11 Frederica Rd. North

Hampton Club	22
Sea Palms	22

* St. Simons Marina

Coastal Kitchen	73
-----------------	----